

(Measurements include decorative frame)

1622 Instove INSET

**INSET SOLID FUEL
ROOMHEATER
FOR INSTALLATION IN
STANDARD BRITISH or IRISH
FIREPLACES CONFORMING TO
BS1251 & BS8303**

INSTALLATION AND OPERATING INSTRUCTIONS LEAVE THIS DOCUMENT WITH THE HOUSEHOLDER!

<div><div>CONSTRUCTION CONFORMS TO EUROPEAN STANDARD</div><div>EN 13229</div></div> <div><div><div>400 to combustibles above</div><div>250 to combustibles at side</div><div>STOVE</div></div></div>	<p>Intermittent burning solid fuel room heater for installation in masonry fireplace with a single dedicated chimney.</p> <table><tr><td></td><td>Wood logs</td><td>Mineral fuel (Ancit)</td></tr><tr><td>Approx. efficiency</td><td>78%</td><td>76%</td></tr><tr><td>Nominal Output</td><td>4.9Kw</td><td>3.0kW</td></tr><tr><td>Minimum clearance to combustible materials Must be maintained</td><td colspan="2">Top: 400mm All other faces: 250mm</td></tr></table>		Wood logs	Mineral fuel (Ancit)	Approx. efficiency	78%	76%	Nominal Output	4.9Kw	3.0kW	Minimum clearance to combustible materials Must be maintained	Top: 400mm All other faces: 250mm	
	Wood logs	Mineral fuel (Ancit)											
Approx. efficiency	78%	76%											
Nominal Output	4.9Kw	3.0kW											
Minimum clearance to combustible materials Must be maintained	Top: 400mm All other faces: 250mm												

Manufactured for Rectella International Ltd, Bancroft Road, Burnley, Lancs, BB10 2TP

Tel: 01282 478200

Web: www.barbequick.com

Read these instructions! Use only recommended fuels!

Contained in this box are the following components

1 x Sealing rope 1 x Double sided sticky tape for fixing the sealing rope 4 x Stove securing bolts and washers
 1 x Flue collar 2 x Flue collar bolts, nuts and washers 1 x Operating tool
 1 x Primary air slider and slider knob

Box contents



Flue collar



Primary air slider



Fixing Kit comprises a sealing rope and double sided sticky tape for fixing the rope to the rear face of the inset before installation (See fixing drawing page 4), four securing bolts and washers for securing the stove to your chimney breast and a flue collar to attach the stove to your flue liner if required.

IMPORTANT: Remove all the packaging from around the upturned grate. Remove the grate and remove the securing screw. This will enable you to remove the unit from the pallet. The grate will need to be replaced as shown in fig 4 prior to first use.

(Fig 3) Grate as packaged upside down.



(Fig 4) Grate as it should be at first use.

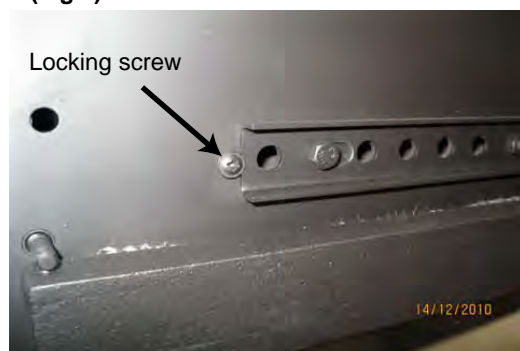


Securing screw located under grate

DEFRA Approval

Note! in a smoke control zone to comply with DEFRA regulations, when burning wood the appliance must be fixed with a mechanical stop to ensure the top air wash remains open.

(Fig 5)



(Fig 5a)



An additional screw is fixed to the body to lock the top air control open for burning wood when installed in a smokeless zone. (See Fig 5). This may be removed if you are not within a smokeless zone or do not intend to burn wood.

Flue reading test point.
Remove bolt to allow connection of meter. Replace bolt after testing.

IMPORTANT

Co2 DETECTOR

It is the responsibility of the installer to fit a fully operational Co2 detector in the same room as this appliance.

INSTALLATION

**THIS APPLIANCE CAN PRODUCE POISONOUS GASES IF NOT FITTED CORRECTLY.
THE STOVE AND ITS SURROUND CAN BECOME EXTREMELY HOT**

A fire-guard should be used if children or infirm persons are present.

The installer is required to EXACTLY follow these instructions and to completely comply with all local, national and international standards.

INSTALLING a stove is a 'controlled service', the law expects that it is either supervised by a qualified installer or that the building inspector is informed. Check with your local authority.

ASBESTOS: Your stove does not contain any asbestos, but take care to avoid disturbing asbestos in an old installation.

WEIGHT: Your stove is heavy - take great care when moving it and ensure that the intended fireplace can support the weight- consider fitting a load distributing plate.

YOUR CHIMNEY: by becoming warm, makes the gas inside it rise, pulling fresh air into the stove to make it work. It must:

- Generate a draught in use of at least 12Pa (0.05ins wg)
- Be capable of withstanding the temperatures generated.
- Be incapable of leaking fumes into the dwelling

This will commonly be achieved by it:

- Being at least 5m high.
- Terminating at least 1m above any roof ridge.
- Having an internal cross-section not less than 0.018m² (e.g. 150mm diameter) and never more than 0.14m² (e.g. 375 x 375mm)
- Being free from even the slightest crack or source of leakage.
- Having no bends sharper than 45°.
- Being entirely free of obstructions and swept by a qualified chimney sweep.
- Being connected only to this one appliance.
- Being of thick masonry or otherwise adequately insulated.
- Conforming to local building regulations.

Special rules apply where the flue passes through timber, thatch or other vulnerable materials- take specialist advice.

Although it is possible to access the chimney through the fire with the throat plate removed, fit hatches to provide access if needed.

AIR SUPPLY: Your stove needs air to breathe - there must be a permanent fresh air supply into the room in which it is installed equal to about 550mm² (e.g. 23mm square). This can often be provided by air naturally leaking into the building (it is commonly accepted that this alone can suffice for appliances <5kW) but in any case of doubt, fit a purpose-made air vent. An extractor fan, or another fuel-using appliance, even in a different room, can remove this air.

LOCATION:

To prevent the risk of fire, the location into which your 1622 is fitted must always:

- ☒ Have no combustible materials (such as a wooden surround) within 250mm of the stove sides or 400mm above
- ☒ Be made of materials able to continuously withstand 250°C
- ☒ Even outside these distances take care in locating vulnerable materials such soft furnishings, decorations and other flammable materials.

CHIMNEY SWEEPING:

Although it is often possible to sweep the chimney through the fire with the baffle plate removed, consider fitting cleaning hatches to provide access if needed.

PRE-FITTING:

The 1622 can fit straight into a standard fireplace (Fig 9 on page 4) conforming to BS1251 & BS8303, which will:

- ☒ Have an opening width (A) of between 400 and 420mm.
- ☒ An opening height (B) of between 550mm and 570mm.
- ☒ A flat area (C) extending 70mm around the opening.
- ☒ Have a heat-resistant hearth extending at least 300mm (D), without obstructions to prevent the door opening.
- ☒ Have the chair brick removed.
- ☒ Where thin slabs of mineral material (marble, limestone etc.) are used to face a fireplace, we recommend using separate panels, as shown, to allow for differential expansion.)

FITTING:

- Referring to Fig 6, 7 and 8, peel off one side of the protective film and apply the double sided tape to the rear of the stove edges (as in Fig 6) pressing down firmly to make sure of good adhesion, then peel away the second side protective film and apply the soft rope seal to the sticky double sided tape (Fig 7) with a finished rope seal all the way round (Fig 8).

(Fig 6)



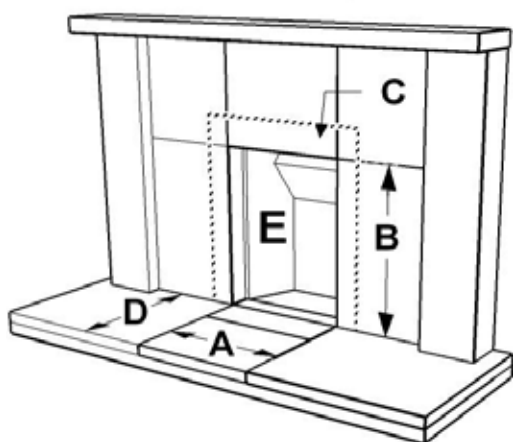
(Fig 7)



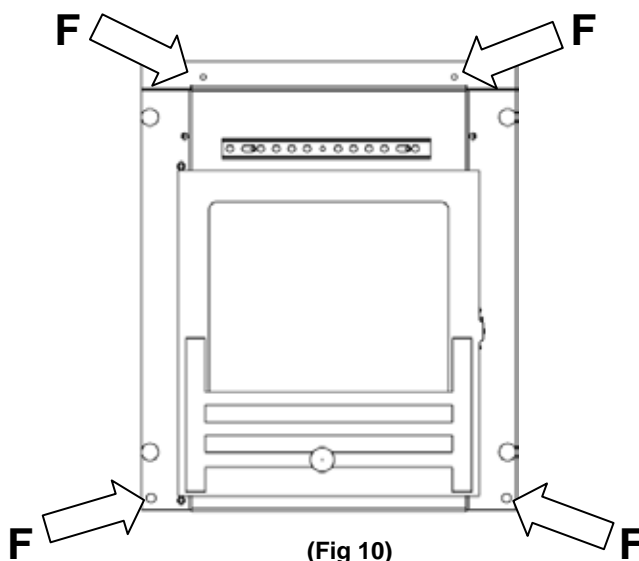
(Fig 8)



- If fitting a flue liner, attach the flue collar to the flue liner. You may require a special appliance connector from the liner to the stove. These are available to suit various sizes of flue liners and may need self tapping screws and fire cement to fix in position.
- Align the collar so that the flue collar fixing holes on the stove are aligned with the fixing holes on the flue collar.
- Push the stove into the fireplace opening, ensuring that the rope seal on the rear of the stove forms an **absolutely** airtight seal against the fireplace. In some cases it may be necessary to knock-out part of the old fireback.
- Secure the stove using the stove securing bolts into the upper left and right fixing holes and into the bottom left and right fixing holes (F) Fig 10. It is not necessary to fill any *small* gap behind the appliance – larger gaps can be filled with rubble, vermiculite granules or mineral fibre.



(Fig 9)



(Fig 10)

- If fitting a flue liner, remove the baffle plate (as shown on page 8) and reach up through the stove and pull the stove collar down and secure the flue collar to the stove with the two flue collar bolts, nuts and washers as in Fig 11 and Fig 12 with a finished and secure flue collar as in Fig 13. (Flue liner not shown for description purposes).

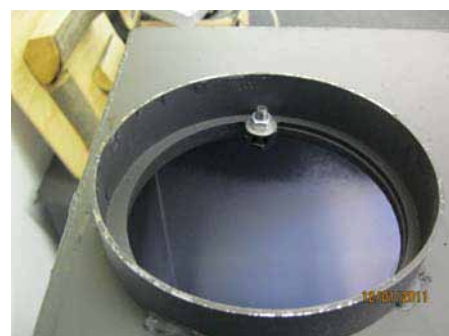
(Fig 11)



(Fig 12)



(Fig 13)



Primary air slider – Assemble the slider from the inside of the door. Push the slider bar bolt through the hole in the door and then tighten the slider knob ensuring that the slider is free enough to slide back and forth. Make sure that the slider slides and that the air holes line up.

(Fig 18)



(Fig 18) Primary air slider kit. Slider and slider knob

(Fig 19)



(Fig 19) View from inside door with slider fixed in correct position.

CHECK THE INSTALLATION !

Once installed, light the fire, demonstrate it to the householder and check that:

- ☒ It burns controllably and does not emit fumes to the room
- ☒ The route for gases from the stove to the chimney terminal is completely airtight, unobstructed and able to be swept.
- ☒ The entire construction is of durable fireproof materials.
- ☒ The flue presents a draught in use of at least 12Pa - Use test hole as shown in Fig 5a on page 2.

LIVING WITH YOUR STOVE

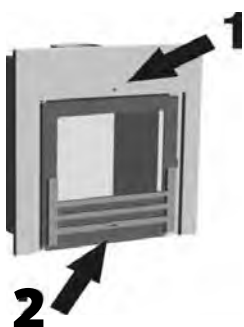
Every fuel, chimney and condition of use is different. Only experience will show which the best settings for you are.

The operating tool is used for opening the fire door, removing the ashpan and moving the primary and secondary air sliders.

IMPORTANT: The operating tool MUST be used for opening and closing the stove door. Excessive force closing the door by hand may result in the door glass breaking and this will not be covered under the stoves warranty.

LIGHTING If lighting after a period of non-use, check that the flue ways and chimney are completely clear. Empty the ashes.

Place firelighters or screwed-up paper covered with dry sticks at the back of the grate and light them. When they are burning well gently fill the fire with dry fuel, close the door and set the air control slides to the 'high' (right) position. As soon as the fire is burning well, move the controls to the lowest practical setting. During the ignition stage you should not overload the fire, it is better to load little and often.



CONTROL How fast the fire burns depends on how much air reaches the fuel. The stove when not burning in a smoke control zone has two air controls, one above the window ('air wash control' ①) and one below the window ('primary' ②). **Note! in a smoke control zone** to comply with DEFRA regulations the appliance must be fixed with a mechanical stop to ensure the top air wash (secondary air control (1)) remains open. Move the slides to the right for highest output, to the left for 'low'. Our tests indicate highest efficiency on wood with the primary control all but closed and the air wash 2/3 open. Anthracite works best with the air wash closed and the primary 1/3 open. But the best settings will depend on your fuel, air supply and flue draught and can only be found from experience.

EMPTYING ASHES use the tool or handle or a glove to open the door. Stir the fire with a poker and use the tool to lift out the ashpan. Remember to let ash cool before disposing in plastic sacks or dustbins. There is no need to empty every last speck, but ash from mineral fuels should never be allowed to build up so that it comes into contact with the underside of the grate.

CLEANING Wipe the stove body with a slightly damp cloth when cool, don't use abrasives, metal polish or 'cream' cleansers as they can scratch the surface. NEVER use aerosol sprays near the hot fire – they can ignite.

KEEPING THE WINDOW CLEAN With most fuels the window will require no cleaning other than an occasional wipe with a dry cloth when the stove is cold. Operating the stove at high output will usually burn-off any deposits left by tarry or wet fuels. Severe stains can be removed with a proprietary cleaner. After a period of use tiny hairline cracks may appear on the window, this is not a fault, but is characteristic of the toughest and most heat-resistant material currently available. Reduce the risk of staining by using only *very dry* fuel and having the air wash control always *slightly* open.

OPENING THE DOOR This stove is designed to be operated only with the door closed. Open the door very slowly to minimise fume emission and prevent hot fuel falling out.

FUELS

There is no 'perfect' fuel, so we strongly recommend that you try a selection of fuels (or mixtures) to find which suits you best. Do avoid dusty materials like sawdust; they can burn far too violently.

SMOKE CONTROL AREAS:

In certain areas of the UK (Smoke Control Areas) special rules apply to reduce smoke nuisance. This appliance is only exempt when burning dry wood logs of suitable size detailed below or authorised fuels. Details of authorised fuels can be obtained from your local authority.

When an appliance is installed in a smoke control area the appliance must be fitted with a mechanical stop to fix the secondary air control open. This may be removed if you are not within a smokeless zone or do not intend to burn wood.

WOOD: Wood only emits as much carbon to the atmosphere as the tree took in when growing, so wood is considered the 'carbon neutral' fuel. When wood is cut down its cells are full of water. Burning such wet or 'green' wood wastes heat in making steam and produces flammable acidic tars which will cling to and rapidly damage your stove and chimney. Split logs will typically take two years to become reasonably dry, round logs much longer. Cracks in the ends, a hollow sound when tapped and bark falling away are all signs that a log may be ready for use. The fine, white residue produced when wood burns is not ash, but the remains of cell walls which can burn if kept hot enough, so don't de-ash the fire until absolutely necessary.

For best performance on wood, and always if low smoke emission is expected:

- Split logs lengthways for drying

- Use logs no bigger than about 100mm x 250mm

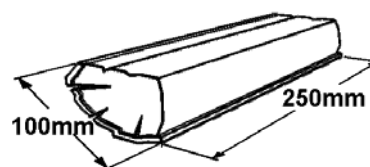
- Ensure logs are *absolutely dry* (less than 20% moisture)

- Fill the stove criss-cross, so air can circulate between logs.

- Fill 'little and often'

- Always have the air wash control (1) at least a little open. (in Smoke control areas this must be permanently fixed open)

- When first lighting, or reviving a fire from embers, use only very small, thin, dry, sticks.



JOINERY WASTE: Dry wood offcuts will burn well, but don't expect softwood waste to burn as cleanly or for as long as hardwood logs.

PEAT: Sod turf must be thoroughly dry. BNM peat briquettes are approved for use in Smokeless Zones in the RoI.

LIGNITE: (not smokeless) is a natural mineral, between peat and coal. It lights easily and burns well, but produces much ash

HOUSECOAL or BITUMINOUS COAL: (not smokeless) makes lots of tarry smoke and large volumes of flammable gas which make it difficult to control and risk explosions. Despite its low cost, it rarely represents value for money. Don't use house coal.

ANTHRACITE: (Smokeless) is a natural hard, shiny form of coal. Slow to light, it can burn for very long periods with great heat. Despite its high price-per-bag it generally works out to be one of the cheapest of all fuels. Use the 'small nuts' size. Anthracite works best with the air wash closed and the primary 1/3 open. But the best settings will depend on your fuel, air supply and flue draught and can only be found from experience.

COKE: (Smokeless) is coal from which the smoke has been removed. Sometimes difficult to light, it burns very cleanly.

BRIQUETTES: Are compressed blocks of fuel, generally able to burn for long periods and remarkable for their consistency. 'Homefire' and 'Phurnacite' are smokeless types while other brands are made from lignite, peat or house coal.

PETROLEUM COKE: sold as 'Petcoke', 'Longbeach' and under various proprietary names, is made from oil. Easy to light and to control, its exceptional heat and lack of protective ash mean that it **MUST NOT** be used unless mixed with another fuel. Grate and liner life will be drastically reduced when using petroleum coke

HOUSEHOLD WASTES: Some plastics give off toxic fumes when burned and remember that batteries and aerosols explode! The stove is not an incinerator, so only ever use the recommended fuels and **NEVER** use liquid fuels in any form.

Operation to Avoid Smoke Emission when Loading and Re-lighting

To prevent the likelihood of smoke emission it is advised that:

The appliance is not overloaded

- ☒ Fuel should be added to fill the stove criss-cross, so air can circulate between logs.
- ☒ Fuel should be added 'little and often'
- ☒ Always have the air wash control (1) at least a little open.

Kindling is used to relight from a low fire-bed

- ☒ use only very small, thin, dry, sticks
- ☒ only when alight larger fuel should be added

PROBLEMS?

Problems like those listed here are usually due to some difficulty with the installation, chimney or fuels, so please check back through this leaflet carefully. If necessary seek specialist advice.

POOR HEAT OUTPUT: A stove can heat a typical room of about 12m³ volume for each kW of output, so a 5kW model can heat up to (12 x 5) 63m³, a room of about 5m square. The actual size depends on the insulation and air-change ratio of the room. To attempt to heat a larger room will result in excessive fuel consumption and damaging overheating. Use the recommended *very dry* fuels.

LACK OF CONTROLLABILITY: Wood and some other fuels may burn excessively until the gases in them have been used up. You can reduce this effect by making sure that the fire is set to 'low' for a while before refuelling and checking that the door seals fully. For stoves with a Smoke Stop - adjust the heat output by how much fuel you put on, as well as by using the controls. Check that the door seals are sound.

DIFFICULTY BURNING FOR EXTENDED PERIODS If the fire goes out with fuel still in the firebox, then this is probably because too little air has been reaching it, try leaving the air controls open a little more. Check that the door seals are sound and that there are no cracks or gaps anywhere in the flue. For longest burning, we recommend hard fuels such as anthracite.

CONDENSATION: Condensation onto cool stove surfaces can be severe if fuel is in any way damp. Even an apparently dry 1 kg log can hold 200 ml, a cupful, of water. *Use only very dry fuel.*

OVER-FIRING: It is possible to leave the fire too long with the controls set too high leading to 'over firing', seen as glowing metal parts, excessive chimney temperature and risk of parts failing or chimney fires. Always set controls to the lowest practical setting.

SMOKE COMING INTO ROOM: Fumes are poisonous- smoke emission must NEVER be tolerated, causes might be:

INADEQUATE SEALS: Are all flue pipes and connectors absolutely gas-tight? Check that an inset appliance is fully sealed against the fireplace. Even the tiniest crack or gap can spoil the draught.

BLOCKED BAFFLE PLATE: Has soot and ash can collect on the 'throat plate' above the inner back part of the firebox? See the 'maintenance' section.

UNSUITABLE, BLOCKED OR UN-SWEPT CHIMNEY: The first requirement for correct operation is a sound chimney. Check the requirements earlier in this document and in any case of doubt have the chimney professionally swept.

POOR AIR SUPPLY: Is there enough air? Lack of air to the fire is a common cause of smoking and poor performance. Air supply problems may be worse in certain wind conditions (often incorrectly ascribed to 'downdraught', which is in fact very rare), where air can be sucked out of the room. The answer is to fit an air vent, as near to the fire as possible, facing into the usual wind direction.

DOWNDRAUGHT: Wind can blow *down* a chimney if there is something higher nearby such as a tree, hill or high building. Fitting an anti-downdraught cowl to the chimney top can cure this. Types which cannot be swept through are not recommended.

POOR CHIMNEY DRAUGHT- Chimney draught in use **MUST** be at least 12Pa.

CHIMNEY FIRE: In the rare event of deposits inside the chimney igniting (roaring sound + dense smoke and sparks from the chimney) immediately close the door, shut all air controls and call the fire brigade. Prevent fires by using *very dry fuel* and having your chimney swept regularly.

MAINTENANCE

ANNUALLY- SWEEP THE CHIMNEY The entire length of the chimney from stove to outlet should be swept annually or more often if smoky fuels are used.

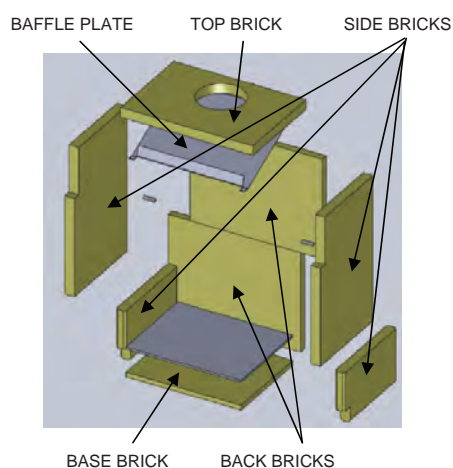
SUMMER SHUT DOWN: Before a long period of non-use, empty fuel and ash, remove the throat plate and leave all the air controls open to allow ventilation to reduce condensation.

NEW PARTS - Your stove has been extensively tested for safety - please don't try to modify it and always make sure to obtain genuine spare parts.

Your stove generates VERY high temperatures. Eventually the internal parts will require replacement. Fig 14 shows the internal layout of your stove. A full list of replacement parts can be found on page 9 of the instruction booklet.

Help parts to last by:

- ☒ Using only recommend, *very dry*, fuels.
- ☒ Emptying the ash very regularly when using mineral fuel -never allow it to touch the underside of the grate.
- ☒ Cleaning the throat plate regularly.
- ☒ Avoiding 'over-firing'



(Fig 14)
Internal layout



(Fig 15)
Operating tool



(Fig 15a) Opening and closing the door



(Fig 15b) Removing ash pan

The operating tool is used for opening the fire door, removing the ashpan and moving the primary and secondary air sliders.

IMPORTANT: The operating tool **MUST** be used for opening and closing the stove door using the location hole as shown in fig 15a above.

Excessive force closing the door by hand may result in the door glass breaking and this will not be covered under the stoves warranty.

Baffle plate removal - Should you wish to sweep the chimney then remove the baffle plate by taking out the two support pins in the side bricks in the top of the stove that hold the baffle plate in place (Fig 16 and 17)

(Fig 16)

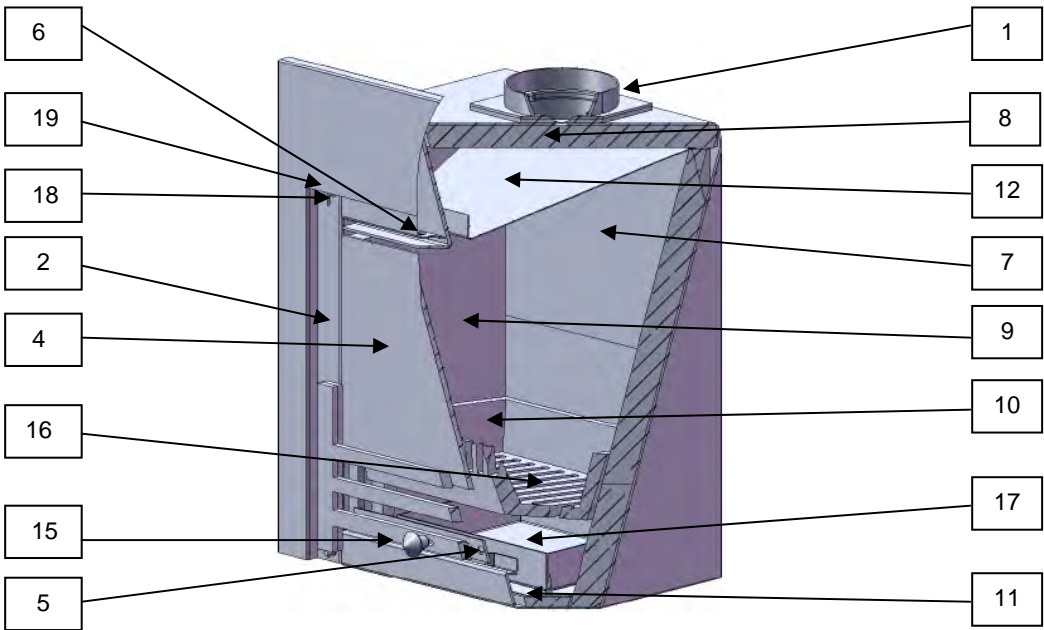


(Fig 17)



ORDERING NEW PARTS – Please use the item list below whenever you need to order.

ITEM NO.	PART NUMBER	DESCRIPTION	QTY
1	1622-015	TOP FLUE RING	1
2	INTEGRA-002	DOOR FRAME	1
3	2040-280	DOOR LATCH A	1
4	1622-006	DOOR GLASS	1
5	1622-021	PRIMARY DOOR AIR SLIDER	1
6	1622-014	TOP AIR WASH SLIDER	2
7	1622-004	BACK VERMICULITE BRICK	2
8	1622-002	TOP VERMICULITE BRICK	1
9	1622-001	SIDE VERMICULITE BRICK	2
10	1622-001a	LOWER SIDE VERMICULITE BRICK	2
11	1622-003	BASE VERMICULITE BRICK	1
12	1622-010	BAFFLE	1
13	2040-290	DOOR CATCH B	1
14	1622-020	MAGNET	4
15	1622-024	CAST IRON KNOB	1
16	1622-025	CAST IRON GRATE	1
17	1622-023	ASHPAN	1
18	1622-026	HINGE	2
19	1622-027	DOOR HINGE PIN	2



TO FIND A QUALIFIED INSTALLER, FUEL SUPPLIER or CHIMNEY SWEEP, CONTACT:

UK: The Solid Fuel Association, 7 Swanwick Court, Alfreton, Derbyshire DE55 7AS Tel:0845-601-4406 www.solidfuel.co.uk

RoI: Irish Nationwide Fireplace Organisation, 162 Chapel Street, Dublin 1 Tel:01-801-5959 www.fireplace.ie

Read these instructions! Use only recommended fuels!

This document, when completed by the installer, constitutes a 'Hearth Notice' for purposes of the England and Wales Building Regulations 2000. It must be left with the householder and placed where it can easily be found.

APPLIANCE SERIAL NUMBER: 	
INSTALLED AT LOCATION: BY: EMERGENCY TELEPHONE:	Flue Draught measured on commissioning: <div style="border: 1px solid black; padding: 2px; display: inline-block;">Pa ins.wg</div> Fuel used on commissioning <div style="border: 1px solid black; height: 40px; width: 100%;"></div>
SIGNED: Who certifies that this installation is safe, has been demonstrated to the householder, conforms with current building regulations and with these instructions	DATE:

GUARANTEE

CONDITIONS OF GUARANTEE

Your stove is guaranteed against defects arising from faulty manufacture for 12 months subject to the following express conditions. Failure to comply with these conditions will invalidate the guarantee.

A HETAS registered engineer or other suitably qualified person installs the stove and fills in the guarantee details overleaf. This needs to be sent to the address shown to activate the guarantee.

- The guarantee is one year from date of purchase.
- The guarantee does not cover parts deemed to be replaceable in the normal usage of the stove. These parts are as follows: Glass panels, rope seals, glass seals, bottom grate or firebars, ashpan, firebricks, cast iron liners, riddling lever, baffle plate and log guard.

HOW TO PROCEED WITH A COMPLAINT

Complaints can only be considered where a suitably qualified engineer has installed the stove in accordance with Document J Building Regulations, the Building Inspector has been informed and the stove has been certified approved.

If the above apply please contact Rectella International Ltd to bring your concerns to our attention. We will assess the nature of the complaint and deal with it accordingly.

If the fault is not related to manufacture but some other misuse or installation problem Rectella will be unable to help with these matters.

SPARE PARTS

Only genuine spare parts are recommended.

Parts that may need occasional replacement are:
Fire bricks, Ashpan, Fire grate

Manufactured in the UK for
Rectella International Limited
Bancroft Rd Burnley Lancs BB10 2TP
tel. 01282 478 200 e-mail: sales@rectella.com
www.barbequick.com

Warranty Registration

To be completed by the qualified installation engineer & certified by Building Inspector
Please complete all sections and fax to 01282 478215 or Email to: sales@rectella.com

Serial Number..... Installation date

Purchased from Purchase date

Model Fuel Type

Flue draught reading

CUSTOMER DETAILS

Name

Address

.....

.....

Tel Email

Received in good condition

Signed Date

Installation Date.....

INSTALLER DETAILS

HETAS Engineer Name/HETAS Engineer Reg.No.

Installing Company Name/Company's HETAS Reg. No.

Address

.....

.....

Tel Email

(Please attach a copy of the HETAS Ltd certificate of compliance which should be fully completed and provided by the installer on completion of the installation work)

INSTALLER SAFETY CHECKLIST

Please instruct owners to read manuals, explain all controls and functions, instruct on operating and maintenance, advise all clearances to combustibles, advise maintenance by qualified engineers, offer advice on glass removal and cleaning. remove all instructions and plastic etc from the appliance and check all fittings prior to lighting.